

DOOR 3

ALL FORMS CONSIDERED AND
ASSEMBLY OF ELEPHANTS PRESENTS



SO MANY SPLINTERED PARTS

BY ELAINE ACWORTH, SHAUN CHARLES, ROBERT FORSTER,
KATHRYN MARQUET, AIDAN ROWLINGSON,
SITA WALKER AND GRACE WILSON

ALL FORMS CONSIDERED AND
ASSEMBLY OF ELEPHANTS PRESENTS

8 - 23 AUG 2025
DIANE CILENTO STUDIO

SO MANY SPLINTERED PARTS

BY ELAINE ACWORTH, SHAUN CHARLES, ROBERT FORSTER, KATHRYN
MARQUET, AIDAN ROWLINGSON, SITA WALKER AND GRACE WILSON

Creatives & Stage Management List



**Writer,
Co-Director &
Co-Producer**
Shaun Charles



**Writer,
Co-Director &
Co-Producer**
Elaine Acworth



Writer
Robert Forster



Writer
Kathryn Marquet



Writer
Aidan Rowlingson



Writer
Sita Walker



Writer
Grace Wilson



Co-Producer
Nicholas O'Donnell



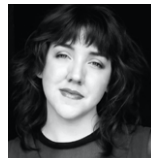
Associate Director
Jessica Veurman



Dramaturg
Saffron Benner



**Set and
Costume Design**
Sharka Bosakova



Lighting Design
Teegan
Kransenburg



Composer
Tyrone Noonan

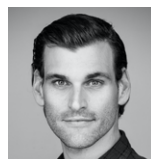


Stage Manager
Lialize du Plessis

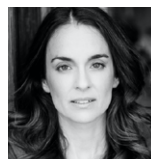


**Voiceovers (Self Check Out) -
Maggie Charles, Emeline Charles
& Violet Charles**

Cast List



Performer
Nick James



Performer
Zoe de Plevitz



**Performer &
Musician**
Tyrone Noonan

Duration

Approximately 85 minutes with
no interval, subject to change
without notice.



More information

Scan for bios, videos and
more on the team behind
So Many Splintered Parts.

A Note from the Directors

Seven writers. One provocation. So Many Splintered Parts.

What do you see when you look out at the world? What does the world see when it looks back at us?

This is the provocation we put to the seven writers we approached to be part of this project.

What they delivered in response is a collection written for now, a gathering that tackles themes of identity, survival, digital culture, class and wealth, mental illness, violence and war – the fractures running through contemporary Australia and the world. A world that's in freefall, stumbling from one man-made disaster to another: it seems we are incapable of not shooting ourselves in the foot!

We also told the writers they would only have two actors: the glorious and fearless Zoe de Plevitz and Nick James. The combined scripts throw a lot at these two, but their performances are a testament to not only their skill, but their level of endurance. And holding all this together is our composer/performer, Tyrone Noonan, who brings with him a rock sensibility and wicked sense of humour.

Warnings

This production contains strong and offensive coarse language, racist themes, adult and sexual themes, and references to mental illness, suicide ideation, abortion, themes of war and violence. It contains strobe, haze, and sudden loud sound.

Recommended for ages 15+.

We understand the themes may be triggering for some people. If you would like more detail about

With minimal props, a spare, evocative set and lighting from design team, Sharka Bosakova and Teegan Kranenburg, and the thoughtful, wide-ranging contribution of associate director Jessica Veurman, these three performers conjure multiple vivid Brisbane worlds from Tesla-driven heritage-listed homes in Paddington to the bus ride of a student going to Woolies in her dressing gown.

Throughout rehearsals the news kept coming – bombs, missiles, drones; elections, scandals, lay-offs, deportations; domestic violence and suicide. Where is the hope? Well – maybe, it's in the fact that these writers wrote what they did, and these extraordinary creatives and performers turned up to work every day - and that Queensland Theatre wants to see this on the stage and that you are here. Now. Possibly being offended. Hopefully having a laugh. And recognising that change might come. And if it does, it comes not from our political leaders but from the grassroots, from collective action – the stuff theatre does so well.

Shaun Charles & Elaine Acworth
Co-directors and co-producers

the specific content of the play, we encourage you to contact our Box Office.

If you or someone you know needs information or support, these organisations are there to help:

LIFELINE 13 11 14

KIDS HELPLINE 1800 55 1800

BEYOND BLUE 1300 22 4636

13YARN 13 92 76

Play synopses, in the order you'll see them:

1. *Self Check Out* by Kathryn Marquet sees the State Opposition Leader's wife come home with a very public story to tell.
2. *The Comment Section* by First Nations playwright Aidan Rowlingson, is a theatrical experiment in which the playwright has trawled the worst of the comment sections the internet has to offer.
3. Robert Forster's play, *Night Thoughts of an Artist*, offers us the pre-dawn ruminations of a Brisbane artist as he works through his life's choices.
4. Shaun Charles' *Hum* details a bus ride home from the Myer Centre, where the boundaries between fact and fiction, past and future, 'us' and 'them', become porous.
5. Grace Wilson's *Life According to Rachel*, explores a young woman's shock that a male politician thinks he decides what happens to her body.
6. Sita Walker's *In Education* unfolds at a parent teacher night, where a rookie teacher is put to the test.
7. Elaine Acworth's *The Watchtower*, sees a Brisbane school boy put on his backpack at home - and try for freedom in the Himalayas.

About All Forms Considered

All Forms Considered is the creative home base for Shaun Charles and his collaborators. Performance. Theatre. Opera. Documentary. Music videos. These forms may intersect or overlap, they may hold their traditional form or be abandoned altogether. All Forms Considered as long as they ask questions of the world we've made.

About Assembly of Elephants

Assembly of Elephants (AoE) specialises in new performance works across theatre, digital media, and audio. The company champions new Australian work and develops socially driven theatre on urgent topics. We think the world needs to be a little kinder - and a little crazier. Find us at assemblyofelephants.com

Acknowledgements

Special Thanks - Nick Barter, Judith Hemingway, Julian Meyrick, Amanda Stewart, David Noonan, Caitlin Bolton, Skyla Stewart, John Mundy, Katherine Lyall-Watson, Peter Eckel, Jessica Veurman, Brendon & Caitlynn Farrar (Betsy's Big Lap), Avid Reader, Shirley Moran, Madonna Boman, David Martin, Wilo Riley, Karen Hands, Freddy Komp, Dan Evans, Yuki Asano.

'Spring Rain'

Written by R.Forster/G.McLennan

Published by Concord Music Publishing ANZ Pty Ltd

PRESENTED BY



Assembly
of Elephants

SO MANY SPLINTERED PARTS IS
PROUDLY SPONSORED BY



FUTURE NORMAL

DOOR 3 IS A PROUD INITIATIVE OF

QUEENSLAND
THEATRE



AVID READER

ACKNOWLEDGEMENT OF COUNTRY

Queensland Theatre acknowledges the Jagera and Turrbal people who are the Traditional Custodians of the land on which we work, and their unique relationship with the lands, seas and waterways. We pay our respects to their Elders both past and present, and to all Aboriginal and Torres Strait Islander peoples.