

**QUEENSLAND THEATRE CO.**

# **THE SCENE PROJECT**

**INFORMATION PACK 2026**



Photo by by Jade Ellis

Queensland Theatre Company acknowledges the Jagera and Turrbal people who are the Traditional Custodians of the land on which we work, and their unique relationship with the lands, seas and waterways. We pay our respects to their Elders both past and present, and to all Aboriginal and Torres Strait Islander peoples. We extend our respect to the Traditional Owners of the many lands to which The Scene Project travels across Queensland.

PROGRAM PARTNERS



QUEENSLAND THEATRE COMPANY IS ASSISTED BY THE AUSTRALIAN GOVERNMENT THROUGH CREATIVE AUSTRALIA, ITS PRINCIPAL ARTS INVESTMENT AND ADVISORY BODY. QUEENSLAND THEATRE COMPANY IS SUPPORTED BY THE QUEENSLAND GOVERNMENT THROUGH ARTS QUEENSLAND.

**Registrations open Wednesday 15 October 2025**

**Registrations close Friday 21 November 2025\***

*\*Registrations may close sooner if numbers exceed capacity.*

This pack is designed to provide key project information to support your school's decision to register for participation in **The Scene Project 2026.**

**Please note:** due to the touring requirements of The Scene Project, registrations are limited. Applicants are accepted on a first in basis per district, and a waitlist is formed for schools who do not fit in the initial intake. We encourage you to register quickly in order to avoid missing out.

**REGISTER NOW**

# ABOUT THE SCENE PROJECT

Now in its 12th year, The Scene Project is a state-wide participatory project that involves secondary schools (Years 7-12) in the creative process of performance, from rehearsal through to presentation. It acknowledges young people and teachers as artists and encourages the making, presenting, viewing and responding to live performance in a professional space and manner. The Scene Project prioritises collaboration, professional development of teachers and young people, and enhancing existing curriculum or co-curricular activity in schools.

## WHAT'S INCLUDED FOR REGISTERED SCHOOL GROUPS

- A newly commissioned script written specifically for young people.
- Curriculum resources including cultural safety framework and detailed content warnings
- A full day teacher professional development workshop in a district near you, lead by our creative team
- Access to the QTC team and district peers as you develop your work in classrooms
- A place at an Outcome Day in one of 17 locations in QLD where you and your students will:
  - Present your 15 minute interpretation of the play
  - Watch up to 3 other school performances
  - Engage in a learning forum to unpack and explore student performances
  - Watch a performance of the full play by QTC
  - Q&A with QTC actors and touring team

The Scene Project is non-competitive. It aims to celebrate participation, enable performance-making and offers a supportive and inclusive creative learning environment. Each school and community engage in The Scene Project in their own way, we encourage you to get in contact with us and work through how you can engage with the program and how you can utilise it for broader learning and community outcomes for your school group. It does not need to be a curriculum-based program, many schools offer this program as an extra-curricular activity.



## HOW TO PARTICIPATE

Participating groups are tasked with creating a short (up to 15 mins) performance from the commissioned play. This can be an interpretation of, inspired by or a portion of the text. You are given complete creative license!

On Outcome Day your group has 30 mins on stage, this time must include: set up, technical run, performance (max 15 mins), strike.

For this reason, school performances are limited to:

- No AV/Projection
- Open white overhead lighting: lights at full, mid or blackout\* (\*pending venue capabilities)
- Minimal sound cues
- Minimal set, props and design – the provocation is to work with bodies in space.\*
- Nothing rigged/hung overhead

*\*All items to be brought by you, set and struck by you and your students.*

## CONTACT US

[education@queenslandtheatre.com.au](mailto:education@queenslandtheatre.com.au)  
(07) 3010 7600

# ABOUT THE PLAY

## ICARUS - Reworked

The 2026 commission is from an all-star line-up of Queensland writers, we are thrilled to collaborate with David Burton (*Wisdom, 2020*), Merlynn Tong (*Good Grief, 2018*) Maxine Mellor (*The Fledglings, 2015*) and introducing to The Scene Project writers' room, creator of LaBoite Theatre's 2025 hit '*WE'RE ALL GONNA DIE!*' - Maddie Nixon.

These four powerhouse playwrights are reimagining the myth of **ICARUS**. Guided by QTC artistic trio Daniel Evans - Artistic Director, Fiona MacDonald - Head of Education & Young People, and Saffron Benner - Head of New Work, to fill the script with post-dramatic scenes that push the content to new heights and pull the narrative into new perspectives ripe for young minds to grab and run with.

We've seen the styles students love to perform, we've heard the forms educators want to work with and connect to syllabus, so we're leaning in hard and look forward to soaring towards the sun with you all.

## SYNOPSIS

What's worse than being imprisoned with your Dad: Him making you DIY wings to escape on? Or realising the craft-wings work, flying too close to the sun, melting them like birthday candles and plummeting to your doom?

This contemporary reworking of ICARUS will delve into family relationships, adolescent coming of age discoveries, and the impact of rumour, gossip and control. Expect part psychological thriller, part fairytale, part facebook comments section mixed with some camp and kitsch characters from these writers.



Photography by Shan Jacobe

We encourage you to consider how you can engage students to participate other than in performance. Once registered please consider engaging students as Directors, Stage Managers, Scenographers, Choreographers, Sound and Lighting Designers and Operators to support the full theatre-making experience.

### THEMES

- Freedom and escapism
- Control: societal, familial, internal
- Perspective, significance and rumour – how the death of a young person can go unseen, can be taken out of context, can become the significant part of folk lore/greek mythology
- Ambition and mediocrity
- Hope, change and risk - those who take risks and are willing to fail
- Family relationships
- Coming of age
- Hero's journey

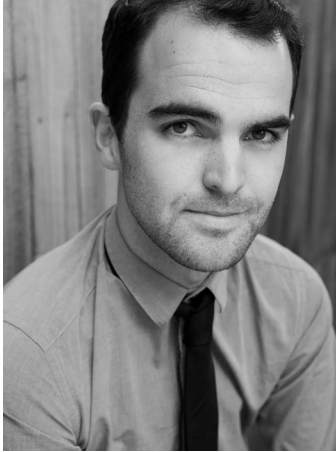
### FORM & STYLE

- Greek Theatre
- Magic Realism
- Australian Gothic
- Epic Theatre
- Realism
- Contemporary Performance
- Visual Theatre
- Physical Theatre
- Theatre of Social Comment

### EXPLORE USING

- Devised theatre
- Ensemble work
- Chorus
- Improvisation
- Monologues & Duologues
- Stylised movement
- Visual Theatre
- Small group work exploring short scenes

# MEET THE WRITERS



**David Burton**  
Co-Writer & Editor

David Burton is an award-winning playwright, director, and educator based in Queensland. His plays — including *April's Fool*, *Wisdom*, and *The Good Dad* — have been performed across Australia and are studied in schools nationwide. With a doctorate in community-engaged theatre and youth arts, David has collaborated with companies such as Queensland Theatre, Playlab, QPAC and Empire Theatres. David also works as a counsellor and coach, and is the celebrated novelist of books *The Man In The Water* and the award-winning *How to be Happy*.



**Maddie Nixon**  
Co-Writer

Maddie is a playwright and journalist. Her plays *We're All Gonna Die!* and *Going, Going, Gone* are published with Playlab. She was the Youth and Education Producer at La Boite Theatre Company from 2019-2021, where she directed David Burton's *The Final Days of Bedlam*. She was a finalist in the Queensland Premier's Drama Award in 2020-21, and was awarded the UNSW Faculty of Arts, Design and Architecture Dean's List Postgraduate award in both 2022 and 2023. She currently works as a journalist for the ABC, reporting on life in outback Queensland.



**Maxine Mellor**  
Co-Writer

Maxine Mellor is an award-winning playwright and teaching artist. She won the 2023 Rodney Seaborn Playwrights Award for *O'Mighty Make-Believe*, the David Williamson Award for Playwriting [2022] and the AWGIE Award for Best Original Play [*Horizon*, 2022], the Lord Mayor's Young and Emerging Artist Fellowship [2017], the Max Afford Award [*The Silver Alps*, 2014], the Queensland Premier's Drama Award [*Trollop*, 2012], the Edward Albee New York City Residency [2012], a Matilda Award for Best New Work for Performance [*Magda's Fascination with Wax Cats*, 2005], and QTC's Young Playwright's Award [2001, 2002, 2003, 2005]. Productions include *Breaking* [Counterpilot, 2023], *Horizon* [Playlab, 2021 and 2023], *The Wind in the Willows* [La Boite, 2015], and *Trollop* [Queensland Theatre, 2013]. Recently she adapted her play *Anna Robi & The House of Dogs* into a feature film with support from Screen Australia.



**Merlynn Tong**  
Co-Writer

Writer and Actor. Playwriting credits include *Legends (of the Golden Arches)* (co-writer), *Congratulations*, *Get Rich!* (La Boite Theatre, Sydney Theatre Company, Singapore Repertory Theatre), *Antigone* (adaptation, Queensland Theatre, Mercury Theatre UK); and *Blue Bones* (Playlab Productions).

Her one-woman-show *Blue Bones* by Playlab Productions, won 6 Matilda Awards including The Lord Mayor's Award for Best New Australian Work, Best Mainstage Production and Best Female Actor in a Leading Role. Her work *Golden Blood* was short-listed for a Victorian Premier Literary Award, NSW Premier's Literary Award, and Sydney Theatre Award (Best New Australian Work). She was the 2020 resident writer of Melbourne Theatre Company.

# 2026 KEY DATES

## TERM 4 - 2025

---

### Registrations Close – Friday 21 November 2025

No payment is required to register; we encourage you to do this ASAP to not miss out.

On registration you will be required to nominate your

- Preferred outcome day dates
- Preferred Teacher PD dates

*\*\* Schools with any outstanding fees from prior programs will be put on the waiting list. Once accounts are settled, you can be moved back to the registered groups if places remain.*

### Placement notification after 5 December 2025

Schools will be notified via email if your registration was successful, or you are waitlisted.

## TERM 1 – 2026

---

### Week 1 | Outcome Day Confirmation

We'll notify you of your allocated outcome day based on your preferences.

We know some schools don't release their calendars until Term 1, so please contact us as soon as possible if you need to make any changes to your outcome day and/or workshop and we will accommodate where possible.

### Week 3 | Invoicing

You will be invoiced and have until **Friday 13 February** to withdraw your registration – this ensures we can give schools on the waitlist your place with sufficient time to participate fully.

To withdraw from the project email [education@queenslandtheatre.com.au](mailto:education@queenslandtheatre.com.au) with your School Name and The Scene Project Withdrawal in the subject heading.

Any withdrawals after this date but before Friday 13 March will incur a \$300 cancellation fee.

Any withdrawals after 13 March will incur full registration fee.

*\*\* We encourage schools to connect with us before withdrawing, there are multiple ways to engage with this program and where we can engage in a flexible participation we will.*

### Week 4 | Script Delivery

We deliver:

- The complete playscript for 2026
- Curriculum Resources for the play
- Cultural Safety framework



### Week 5 | Final Date to change RSVP to Teacher Professional Development

- We'll send out reminders during the term
- Anyone booked in Teacher PD's will receive the Teacher PD survey for us to understand how you and your students are engaging with the script in 2026

### Week 6-8 | Teacher Professional Development

We'll send a confirmation of your Teacher PD time and location and some details for the team onsite.

*Please note:* Any changes to your PD RSVP, must be requested at least 3 business days prior to your PD date by emailing [education@queenslandtheatre.com.au](mailto:education@queenslandtheatre.com.au).

**Brisbane** - Queensland Theatre Company

Wednesday 4 March

10am – 4pm

**Toowoomba** - Uni SQ

Thursday 5 March

10am – 4pm

**Sunshine Coast** - The Events Centre, Caloundra

Friday 6 March

10am – 4pm

**Brisbane** - Queensland Theatre Company

Tuesday 10 March

10am – 4pm

**Bundaberg** – TBC

Wednesday 11 March

10am – 4pm

**Rockhampton** – Walter Reid Cultural Centre

Thursday 12 March

10am – 4pm

**Townsville** – TBC

Friday 13 March

10am – 4pm

**Online/Brisbane** – Queensland Theatre Company

Saturday 21 March

10am – 4pm

*Please note:* We will try to accommodate your preferences, however reserve the right to register you in the online activity if we cannot fit you into the PD. 1 teacher from each school will be prioritised with 2nd places opening once each school has a place.

# 2026 KEY DATES

## TERM 2 - 2026

---

**You and your students create the work in the classroom.**

## TERM 3 - 2026

---

### **Outcome Day Check-in: 1 week ahead of Outcome Day**

We'll send you a form to fill in ahead of your Outcome Day. We'll need:

- Names of all students/class roll and updated group numbers
- Access needs and medical conditions of students that might impact their outcome day
- Anything that requires you to leave early etc

### **Outcome Day**

You'll attend your allocated Outcome Day at your local Performing Arts Centre\* and share your work, before participating in a learning forum with the other schools. The day will finish with a full-length performance from Queensland Theatre Company.

Schools arrive from 8.30am for a 9am start and ends at approximately 3pm.

\*Where possible, otherwise an alternative suitable venue

The indicative Outcome Day schedule is as follows:

**8:30am - 9:00am** - Schools arrive and check in

**9:00am - 9:30am** - Welcome, check in, Warm up

**9:30am - 11:45am** - School performances (Max 4 school groups)

**11:45am - 12:30pm** - Learning forum

**12:30pm - 1:30pm** - Lunch

**1:30pm - 2:30pm** - Queensland Theatre Company performance

**2:30pm - 3:00pm** - Q&A with cast and touring team

\*note this schedule is subject to change based on final number of schools onsite for outcome day and will be communicated prior to your Outcome Day. We ask that you try and stay until 3pm for the Q&A but understand if groups need to leave early.

### **Outcome Day survey | Post event**

We'll distribute a survey for students and teachers - we always appreciate your thoughts to help us continually shape and improve the program!



## TERM 4 - 2026

---

### **Photos distributed - if applicable**

Documentation will only occur at selected outcome days, photos taken during the Outcome Days are compiled after the project and will not be available prior to Term 4. We encourage Educators to capture their own schools outcome performance and group photo on a school device.

### **Registration opens for 2027**

If you have any questions please don't hesitate to connect with the team on [education@queenslandtheatre.com.au](mailto:education@queenslandtheatre.com.au) or (07) 3010 7600.





78 Montague Road  
South Brisbane, Queensland 4101

P 07 3010 7600  
Ticketing 1800 355 528

[education@queenslandtheatre.com.au](mailto:education@queenslandtheatre.com.au)

**Follow us on**

**f** Queensland Theatre Company

**@** QldTheatreCo

**d** @qldtheatreco

**X** @qldtheatre

**in** Queensland Theatre

**REGISTER AT**  
[queenslandtheatre.com.au/tsp](https://queenslandtheatre.com.au/tsp)

© The State of Queensland (Queensland Theatre Company 2026)

**Photography** Cinnamon Smith, Jade Ellis and Shan Jacobe

All information in this magazine is correct at the time of printing and is subject to change.